

SMARTKEEPER PRO® Line Up

Universal Lock Key 3 works with

- USB Port Lock

USB-B Port Lock

USB-C Port Lock Plus

Link Lock

Link Lock Hub

Link On

Secure Drive

Secure Connector
- Network Port Lock Plus

LAN Cable Lock Plus

Secure LAN Cable Coupler

Network Module Lock 4/8/12P

LAN Cable Link Lock + Dedicated Cable

Fiber Optic LC Cable Lock Dual

Fiber Optic LC Cable Lock Single

Fiber Optic Module Lock Plus
- QSFP Port Lock

Serial Port Lock

DVI Port Lock

Parallel Port Lock

SD Port Lock

CF Port Lock

ODD Lock

DisplayPort Lock
- BNC Port Lock

RF Module Lock (Type N/M)

Lock Key Mini works with

- Mini USB-B Port Lock

Micro USB-B Port Lock

USB-C Port Lock

E-SATA Port Lock
- HDMI Port Lock

Mini DisplayPort Lock

RJ45 Port Lock

No key required

- USB Closing Lock

LAN Cable Grip

PC Lock (Key Type)

PC Lock (Combination)
- LAPTOP DOCK & LOCK

Laptop Lock (Combination)

Laptop Lock Plus (Combination)

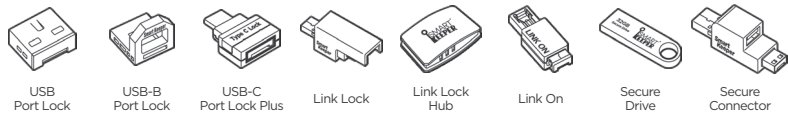
Lock Keys

- Universal Lock Key 3
- Lock Key Mini

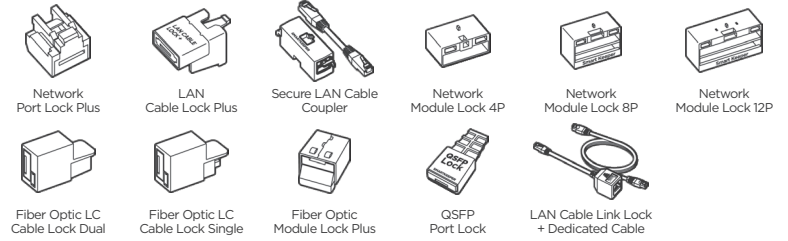
www.smartkeeperworld.com
Made in Korea

Items working with Universal Lock Key 3

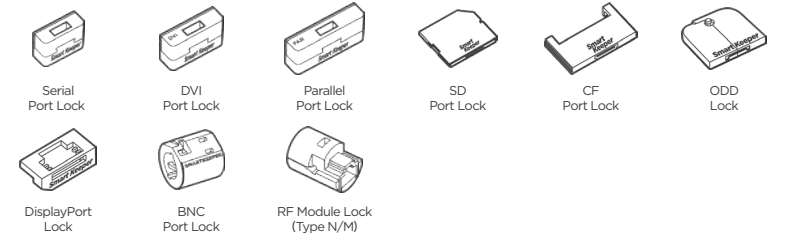
USB Physical Security



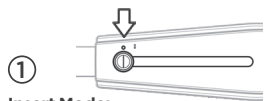
Network Physical Security



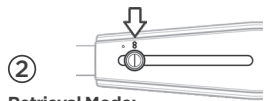
Other Physical Security



Universal Lock Key 3 How to use



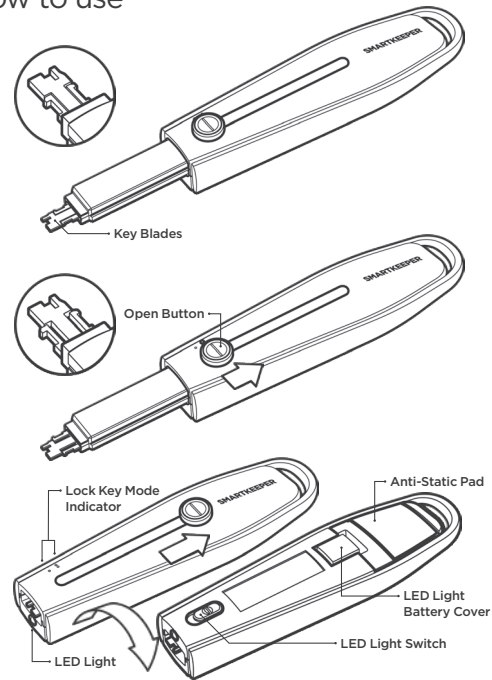
Insert Mode:
Slide the button completely forward and insert/release the key into the lock.



Retrieval Mode:
Slide the button backward to engage the lock for removal and pull out the key.



Storage Mode:
(When don't use) To protect the key header, Slide the button completely backward.



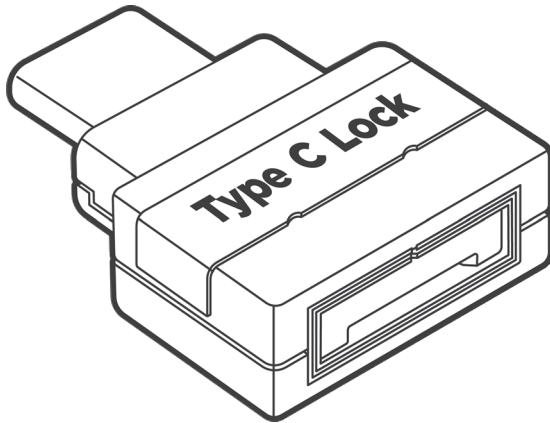
Caution

- Make sure that the key is carefully and fully engaged before removing lock.
- Be careful of sharp key blades. (Put the key blades into storage mode not in use.)

Note

- The manufacturer or vendor is not responsible for any inability to check the serial number.

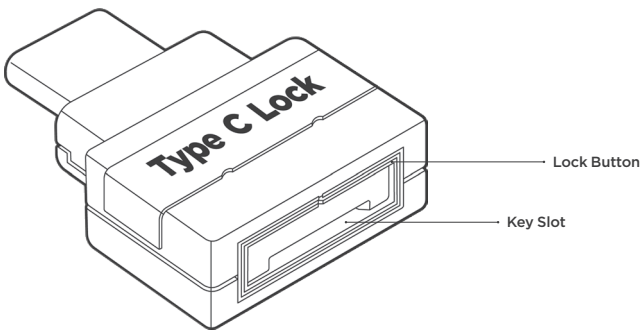
USB-C Port Lock Plus
User Guide



SMARTKEEPER
PROFESSIONAL

USB-C Port Lock Plus

Blocks unused USB-C (type C) port to prevent unauthorized device access.
(⚡ Thunderbolt is not compatible.)

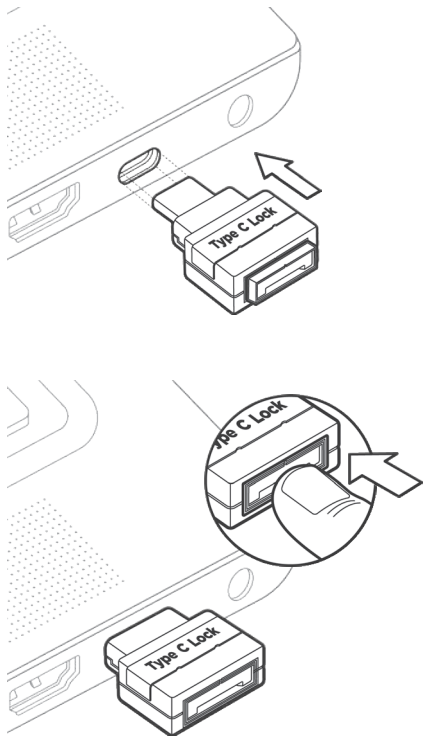


Specification

USB-C Port Lock Plus	Width x Height x Length(Depth): 17.1 x 6.8 x 23.5mm(0.67 x 0.27 x 0.93in) Weight: 3.5g(0.12oz)
----------------------	---

Installation

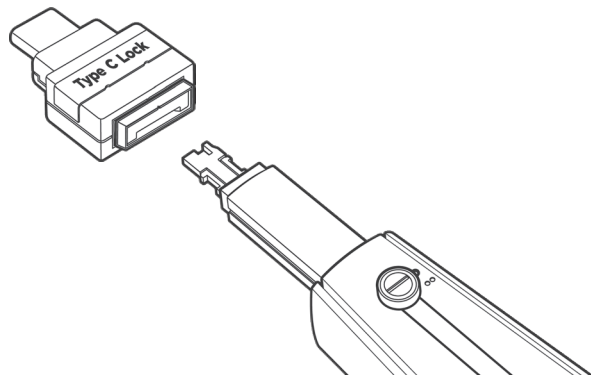
USB-C Port Lock Plus



Please Note:

- In some cases, It may not lock properly depending on the internal structure of the USB Type-C port. When inserting a USB-C Port Lock Plus, please ensure that the locking button does not get pressed.

Caution:



- USB-C Port Lock Plus can be inserted in any direction but Type-C Lock lettering must face same direction as the button on the Universal Lock Key 3.

Uninstall (Removal)

USB-C Port Lock Plus

